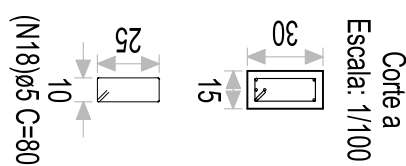
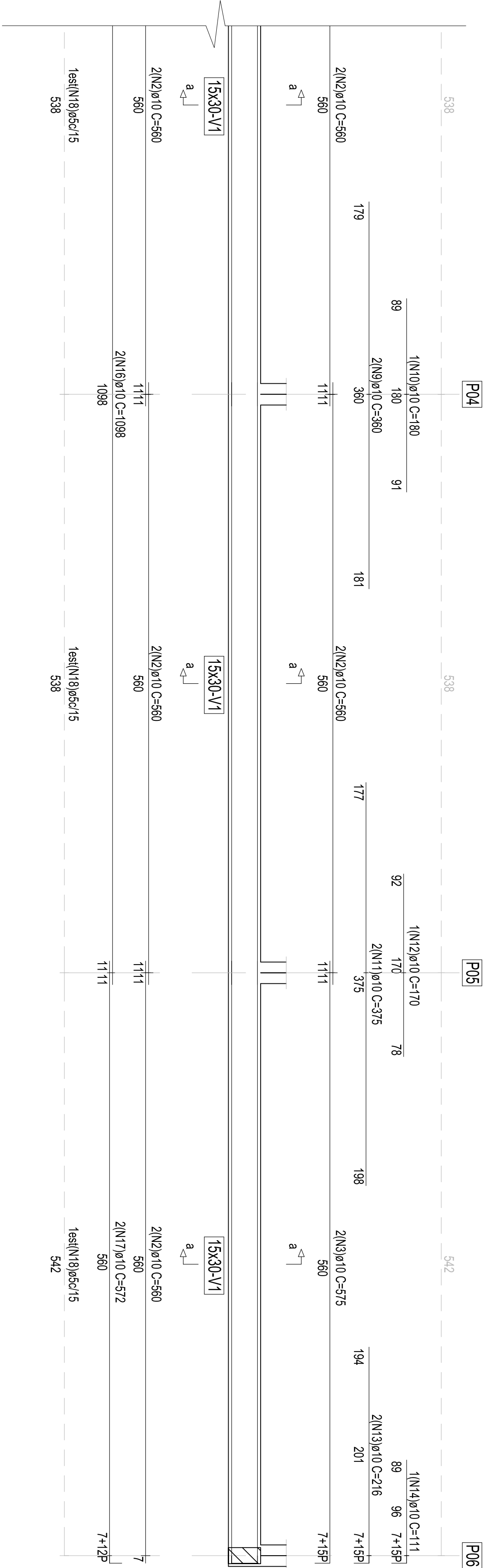
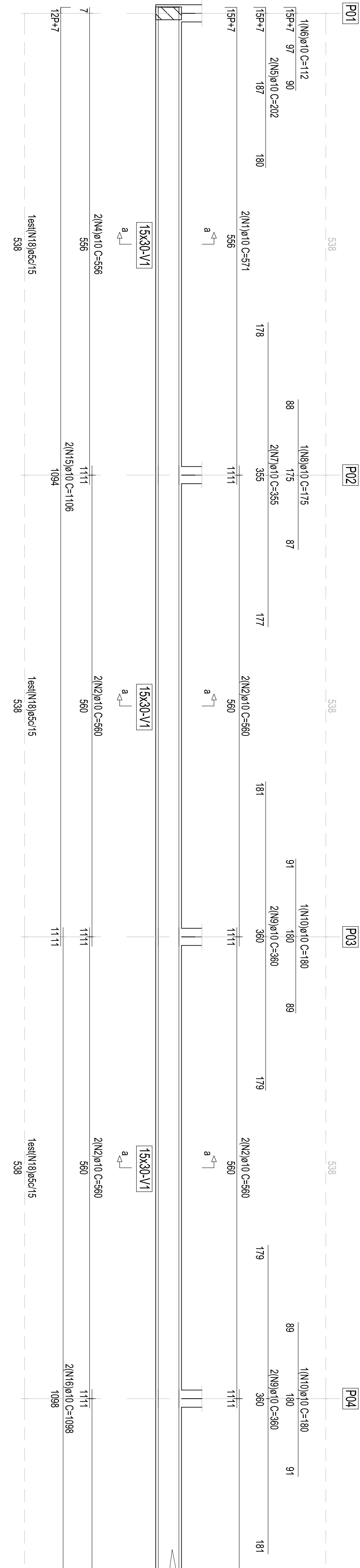


PORTICO-PI
COTA:0

V1



Barra	ID	Qt.	Dim.	Comprimento unitário (cm)	Total		
			P	C. Reto	P	C. Total	(kg)
Vigas do portico							
Aço CA-50 N.5098 Kg/cm²							
V1	1	2,0	10	556	571	1142	7,266
	2	14,0	10	560	560	7840	49,883
	3	2,0	10	556	575	1150	7,317
	4	2,0	10	556	556	1112	7,075
	5	2,0	10	187	202	404	2,571
	6	1,0	10	97	112	212	1,373
	7	2,0	10	355	355	710	4,517
	8	1,0	10	175	175	350	2,231
	9	4,0	10	360	360	1440	9,162
	10	2,0	10	180	180	360	2,291
	11	2,0	10	375	375	750	4,712
	12	1,0	10	170	170	340	2,162
	13	2,0	10	201	216	432	2,749
	14	1,0	10	96	111	211	1,362
	15	2,0	10	1094	1106	2212	14,074
	16	2,0	10	1098	1098	2196	13,972
	17	2,0	10	560	572	1144	7,279
	18	185,95		80	14800	23,542	
Total+10,0%							176,092

CONSTRUÇÃO DA COBERTURA DA QUADRA
DO SANTA CATARINA

DETALHADOS :
DETALHES DAS ARMADURAS DAS VIGAS BALDRAMES
ESCALA 1 : 30
03/06